

3P Volume Filter VF12

Operating and assembly instructions

Item No. 1000950

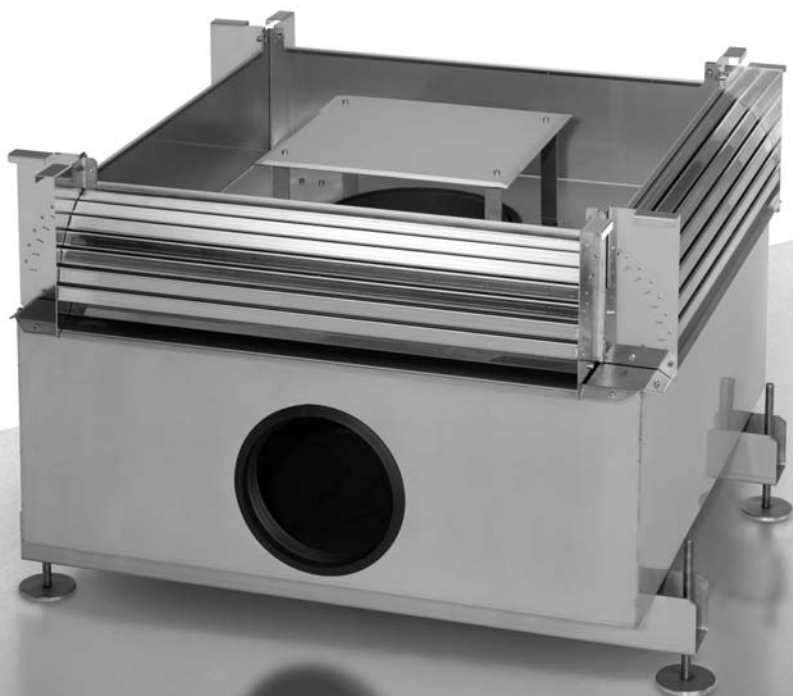
Rainwater filter conforming to DIN 1986:

for roof areas up to 3933 m² with a rain yield factor of 300 l/(sxha)

Filter for installation into a pilot shaft (Ø 2000 mm or Ø 2500 mm)

The lamella units with fine filter can be removed easily for cleaning

Material: Stainless steel



Please carefully read and follow the instructions for the assembly and handling of your rainwater filter, the 3P volume filter VF12.

Contents:

Technical data 02-03
 Method of functioning and areas of use 04
 Assembly instructions – installation 05
 Installation instructions 06
 Optimum installation position, cleaning the filter, removal of the lamella unit 07
 Maintenance instructions and warranty 08

Technical data:

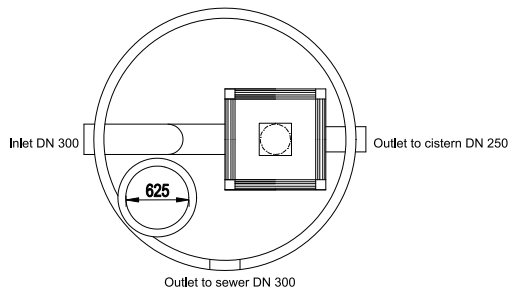
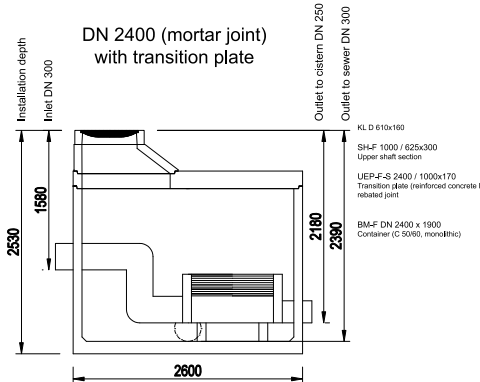
Rainwater filter for installation into a pilot shaft

Side view

Top view

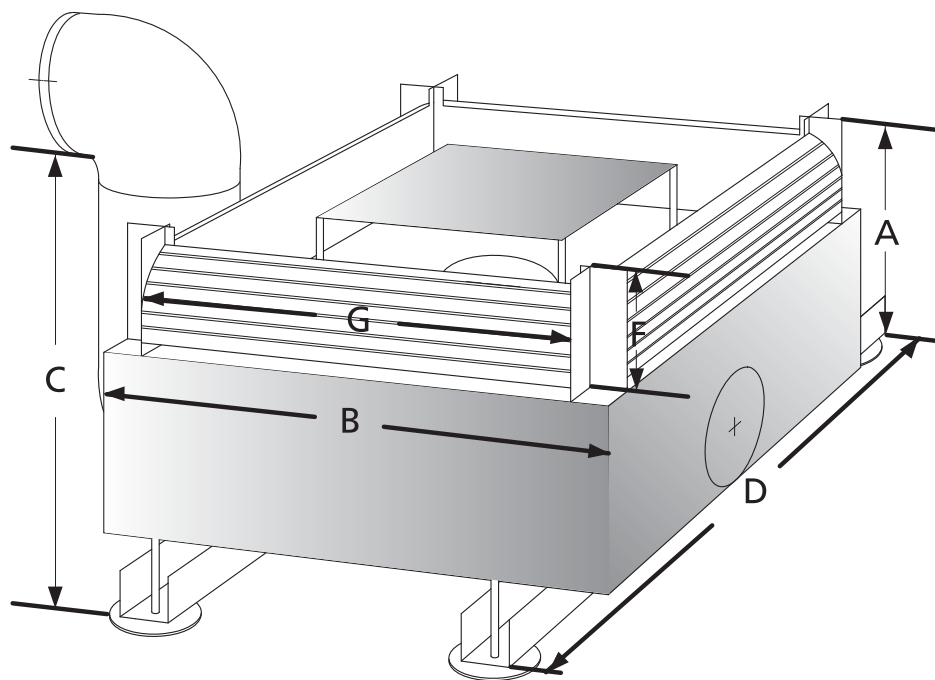
Volume filter shaft VF 12

DN 2400 (mortar joint)
with transition plate



Technical data

3P Volume Filter VF12



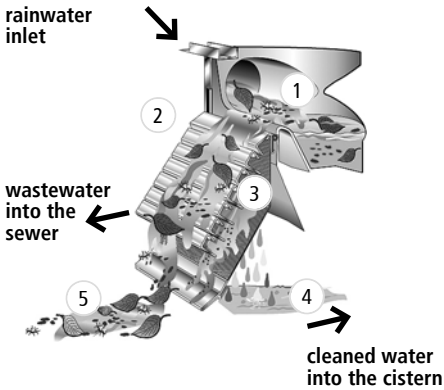
Rainwater supply	Inlet to sewer	Inlet to the cistern	A in mm	B in mm	C in mm	D in mm	E in mm	F in mm	G in mm
1 x DN 300	1 x DN 300	1 x DN 250	780	1070	780	1200	600	275	880

Screen mesh size in mm	min. shaft Ø
0,390 / 0,980	2000

Method of functioning and areas of use

3P Volume Filter VF12

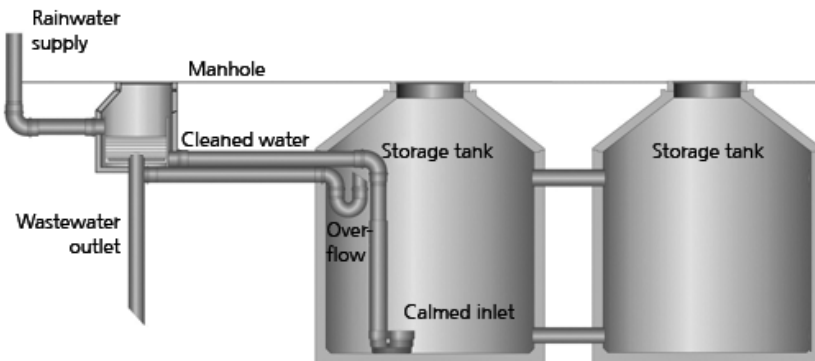
How it works:



1. Incoming rainwater is dammed up and fed evenly over the cascades = submergence principle
2. Pre-cleaning via the cascade principle. Coarse dirt is directed straight to the sewerage system via the cascades
3. Pre-cleaned water is guided to the sieving area (mesh width 0.390 x 0.980 mm) Thanks to the special web structure of the screen, dirt is fed into sewer; hence, the maintenance requirement is low
4. Cleaned water flows into the cistern
5. Dirt is washed into the sewer

Areas of use:

3P Volume Filter VF12 - installation



Assembly instructions

3P Volume Filter VF12 - installation

Installation

It is recommended to have the filter installed in the factory.

For installation in the shaft, we recommend pushing short sleeve pieces corresponding to the specified diameters from the outside through the hole into the appropriate filter connections. This avoids the connecting pipes shifting or the seals warping when assembling on the building site.

If connecting directly on the building site, please ensure that the seals are seated cleanly. The pipe sections should not project any further than 8 cm into the filter.

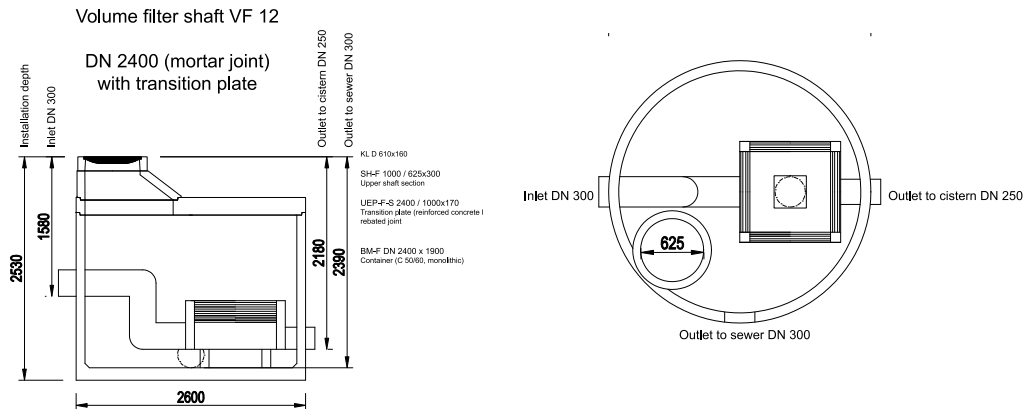
For the sealing of the drill holes in the shaft we recommend Forsheda seals. The filter itself should be vertically levelled.

Compensation rods are included, with which small differences can be compensated. The shaft must be inserted evenly. The shaft bottom should have a downward gradient of approx. 5% towards the sewer connection. This allows dirt deposits to be washed away well.

Assembly instructions

3P Volume Filter VF12 - installation

- Wastewater outlet:** Base of drain pipe = shaft bottom
DN 300
- Outlet to the cistern:** Base of outlet pipe = 21 cm
DN 250 from shaft bottom
- 2 x rainwater inlet:** Base of inlet = 81 cm
DN 300 from shaft bottom



It is advisable to remove the lamella unit before assembly.
To do this, undo the locking screws by 2 to 3 turns → **do not unscrew completely!**
Pull the lamella unit out upwards at an angle.

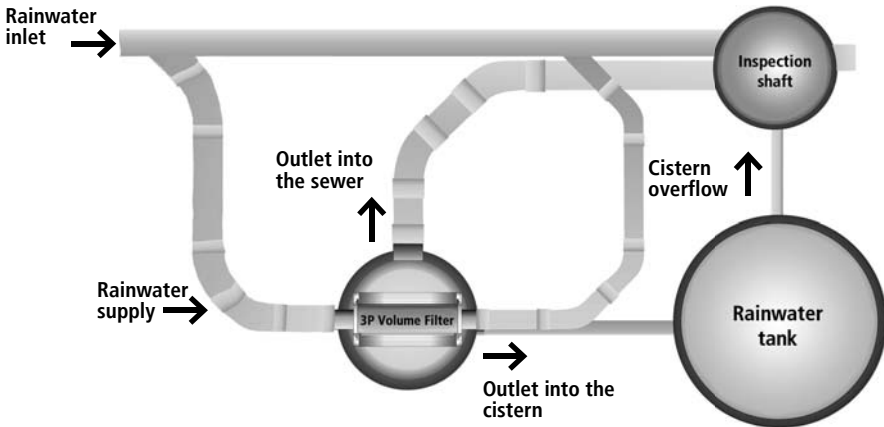
When installing the shaft in the earth, protect the filter with a foil in order to avoid contamination of the filter with mortar when grouting the cone or the shaft rings.

Technical data

3P Volume Filter VF12

Optimum installation position

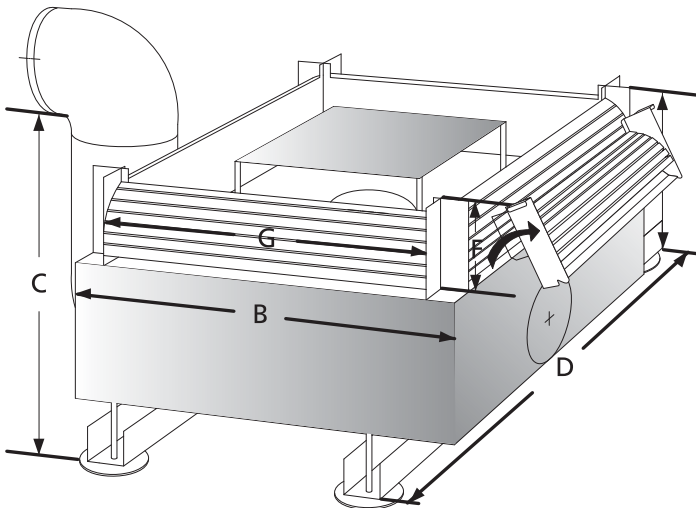
As shown below with infeed and the laying of a bypass.
High security due to bypass installation, hence larger roof areas can also be connected.



Cleaning the filter

Check the function of the volume filter VF12 regularly and clean it as required!

Removal of the lamella unit:



Maintenance instructions and warranty

Maintenance instructions

1. Wash out the tub and the shaft once per year using a water hose.
2. The lamella unit can be cleaned with a high pressure cleaner.
However, do not hold the gun too close to the screen surface, otherwise damage may result.
3. Degrease the filter surface
Pollen and air pollutants may cause grease deposits on the fine screen surface, which must be removed. Loosen and pull out the fine screen; clean both sides using a brush and detergent. It is best to do this after the pollen season, around the end of May / beginning of June. Push the screen back into the lamella unit correctly; insert the lamella unit into the filter body.

Warranty

If a delivery or performance is defective, then 3P technology at its own discretion must either repair the defect or deliver a new item that is free of defects. If the repair fails twice or if it is not economically justifiable, then the buyer/client has the right to withdraw from the contract or to reduce its payment obligation accordingly. Obvious defects must be reported immediately, unrecognisable or concealed defects immediately upon their discovery, in both cases in writing. 3P Technik is liable for repairs and deliveries of new items to the same extent as for the original contractual item. In the case of delivery of new items the warranty period begins again from the start, but only to the extent of the new delivery. Warranty is given only on newly manufactured items. The warranty period is 24 months, starting from delivery to our contract partner. Sections 377 of the HGB (German Commercial Code) continue to apply.

3P expressly states that wear is not a defect.
The same applies to faults that occur due to inadequate maintenance.



3P Technik Filtersysteme GmbH

Robert Bosch Strasse 16-18
73337 Bad Überkingen Hausen
T +49 (0) 7334 92460-0
F +49 (0) 7334 92460-99
info@3ptechnik.de
www.3ptechnik.com